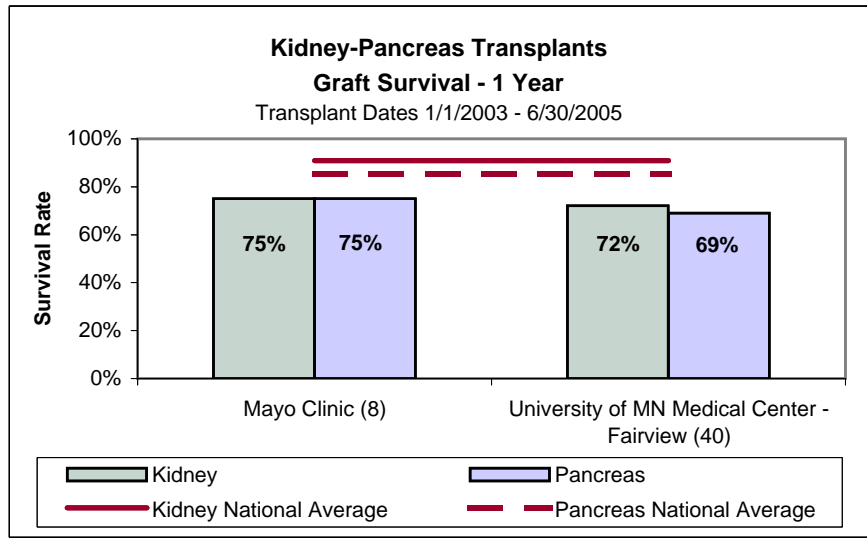
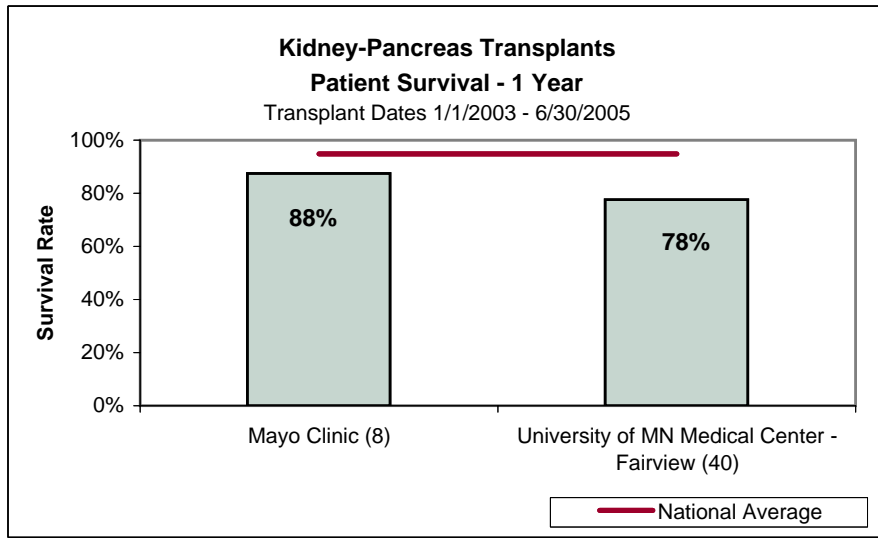
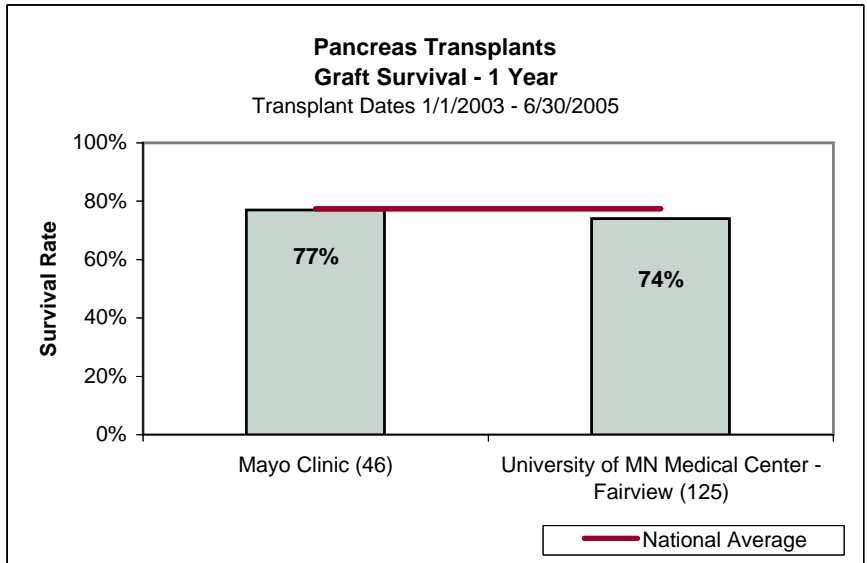
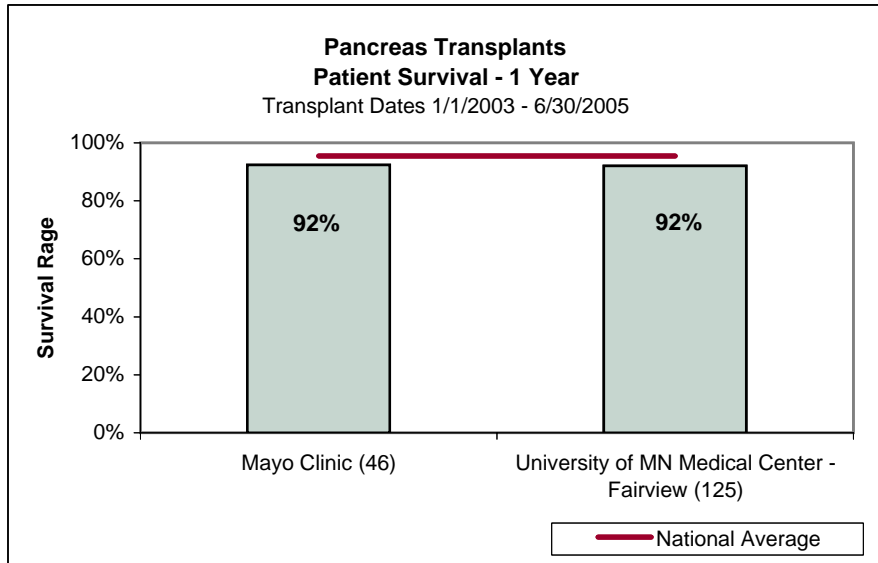


Source: UNOS 6/2006
 Questions: Deborah Mullen, Strategic Health Informatics, ext. 35753



Allogeneic Blood and Marrow Transplants Centers:

Fairview University
Mayo

Autologous Blood and Marrow Transplants

Abbott Northwestern
Children's Hospital
Fairview University
Mayo

() indicates the number of transplant patients or grafts
*** Due to the small number of patients undergoing
Simultaneous Heart and Lung Transplants, these
transplants were not graphed.

Disclaimer/Caution: The data used in the comparison graphs was obtained through a self-reporting process from the designated transplant centers for yearly volume and survival outcomes to the Scientific Registry of Transplant Recipients. The rates have been rounded to the nearest integer/These data comparisons cannot be used to draw final conclusions on transplant quality, care, or expertise provided by the designated transplant centers. It is recommended that members contact each program directly before selecting a particular center. See the document titled "Designated Transplant Centers" for the links to each transplant center in HealthPartners' designated network.

Patient survival follows patients from first transplant of this type until death. Graft survival follows individual transplants until graft failure. Counts for patient and graft survival are different because a patient may have more than one transplant for a type organ.