



2024

Oncology Annual Report

 HealthPartners®

Cancer care locations

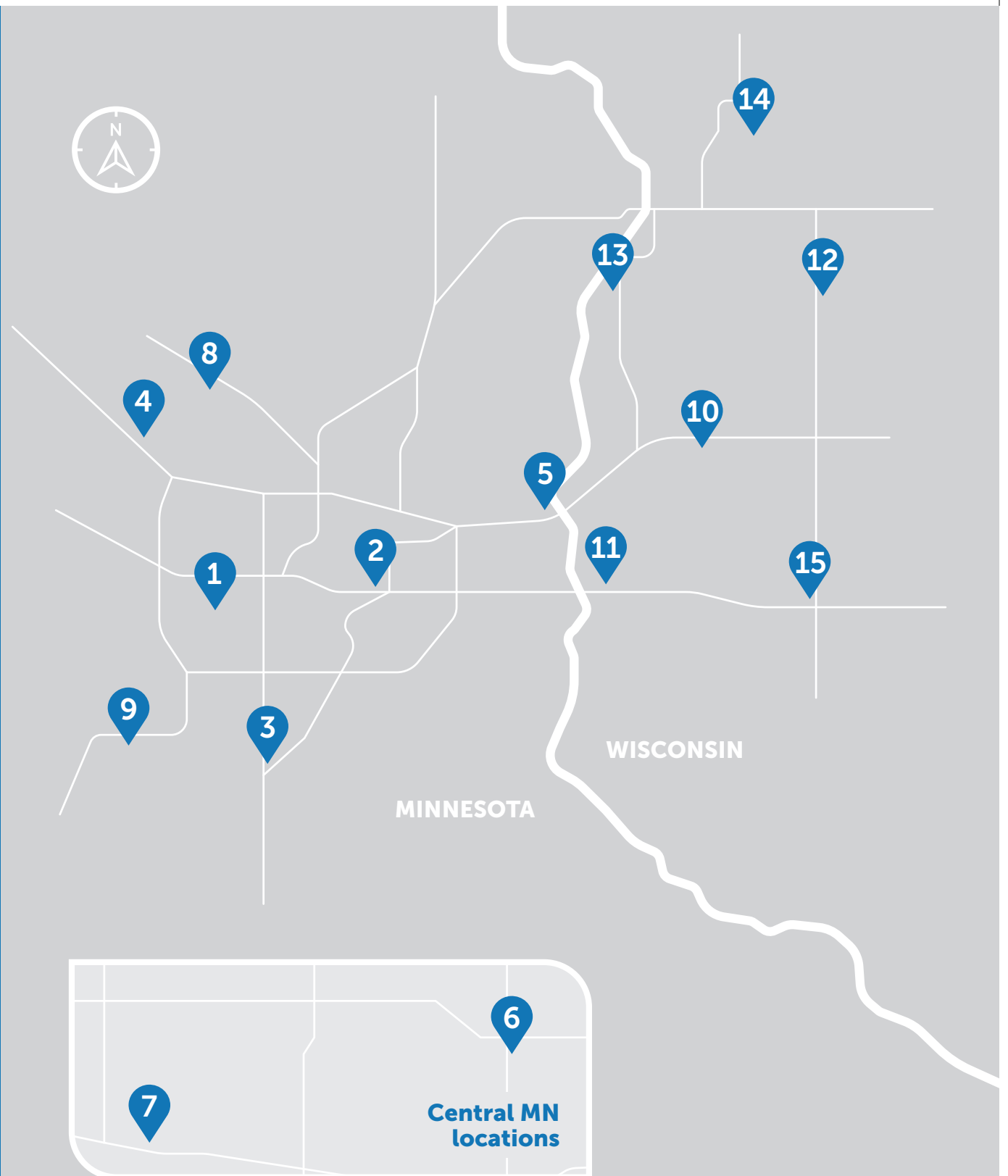
Minnesota

1. HealthPartners Frauenshuh Cancer Center
2. HealthPartners Cancer Center at Regions Hospital
3. HealthPartners Cancer Care at Park Nicollet Burnsville
4. HealthPartners Cancer Care at Park Nicollet Maple Grove
5. HealthPartners Cancer Care at Lakeview Hospital
6. HealthPartners Cancer Center at Hutchinson Health
7. HealthPartners Cancer Care at Olivia Hospital & Clinic
8. HealthPartners Cancer Care at Coon Rapids
9. St. Francis Cancer Center*

Wisconsin

10. HealthPartners Cancer Center at Westfields Hospital & Clinic
11. HealthPartners Cancer Care at Hudson Hospital & Clinic
12. HealthPartners Cancer Care at Amery Hospital & Clinic
13. Osceola Medical Center
Cancer Center of Western Wisconsin*
14. St. Croix Health
Cancer Center of Western Wisconsin*
15. Western Wisconsin Health
Cancer Center of Western Wisconsin*

*HealthPartners provides physician services in partnership with these locations.



A commitment to innovative care

At HealthPartners, we're proud to share the exceptional achievements of our award-winning cancer program. This report highlights our unwavering commitment to delivering innovative cancer care, the latest treatment options and comprehensive support for patients and their families.

With every patient at the center of our focus, we strive to provide the best possible experience. Our dedicated teams ensure timely, expert care, and our integrated single-medical-record system allows for seamless coordination across all stages of treatment. Through this approach, we meet each patient's unique needs with personalized care driven by compassion and excellence.

We invite you to explore the following pages, which reflect the hard work, expertise and dedication of our teams in advancing cancer care. Together, we aim to provide hope, healing and a brighter future for all those affected by cancer.

We are expanding our services by adding care at HealthPartners Specialty Center in Woodbury (opening soon), and more doctors in Coon Rapids.



Daniel Anderson, MD, MPH
Medical Director
HealthPartners Cancer Care
daniel.m.anderson@healthpartners.com



Mark A. Wilkowske, MD
Medical Director
HealthPartners Cancer Care
mark.wilkowske@parknicollet.com



Laura Holasek
Administrative Director
HealthPartners Cancer Care
laura.holasek@parknicollet.com



ASCO'S QOPI CERTIFICATION



Highlights of 2024

\$3.2 million grant from National Cancer Institute

Thanks to a \$3.2 million grant from National Cancer Institute (NCI), HealthPartners Institute is creating a new tool to improve care for patients with genetic risk of cancer. The project, which leverages the HealthPartners myGenetics community research database, helps primary care clinicians provide the latest screening recommendations to patients with inherited breast, ovarian and colon cancer risks.

About 1 million people in the U.S. have certain genes that significantly increase their risk of breast, ovarian and colon cancers. But it's challenging for patients to be confident they're receiving recommended cancer screenings since

guidelines frequently change as the medical community learns more about these genes and associated risks.

HealthPartners Institute researchers are using the NCI grant to create a clinical decision support tool that will help care teams and patients keep up to date with the latest cancer screening recommendations. The goal is to prevent cancers and catch cancers earlier to improve clinical outcomes and quality of life.

"Screening recommendations for these patients are quite a bit different than the screening recommendations for the general population,

and they frequently change, which makes it challenging for patients and primary care teams to stay up to date with current recommendations," said Dr. Patrick O'Connor, senior research investigator with HealthPartners Institute and lead researcher on the project. "We're creating a tool that uses a variety of algorithms to identify current recommendations for each patient and help primary care teams provide these patients with the most up-to-date screenings."

Visit healthpartners.com/mygenetics to learn more and enroll in myGenetics.

Mammography awareness

Kathy Johnson, Nurse Practitioner at Jane Brattain Breast Center, joined the hosts of Twin Cities Live on KSTP to talk about the importance of mammograms. The discussion included 2D and 3D technology, early detection, dispelling myths about callbacks and the availability of same-day and walk-in appointments.



Kathy Johnson, NP



New simulator training

Shannon McGinty, Oncology Nurse Educator, and **Sarah Essen, Frauenshuh Infusion Supervisor,** enhanced patient safety by collaborating with the HealthPartners Institute Simulation Center to develop an innovative Ommaya trainer. The Ommaya trainer enables infusion nurses to practice chemotherapy administration with an Ommaya reservoir before performing the skill on a patient.

Helping patients transition to primary care

A group of primary care and oncology team members has begun creating a new process to help patients graduate from oncology to primary care. When cancer goes into remission, patients need a smooth handoff to return to primary care for follow-up care. The clinician finder team helps these patients find a new primary care clinician.

A collaborative approach to melanoma care

The Melanoma Program was established to enhance communication between the East campus (Health Partners/Regions) and West campus (Park Nicollet/Methodist) oncology programs, promoting a more collaborative approach to melanoma care across the system. This ensures patients benefit from comprehensive, coordinated treatment plans.

The care team includes medical oncologists, surgeons (general, plastic, ENT, podiatrist), dermatologists, dermatopathologists, radiation oncologists and a care coordinator across both campuses. A triage process begins immediately following referral or a positive biopsy result, taking into account the patient's demographic location and personal preferences. Care guidelines are discussed and presented to dermatology and surgical colleagues to streamline the process and achieve consensus on a system-wide approach to care.

A multidisciplinary tumor board meets monthly to review cases. Since the program's launch about a year ago, we've seen a significant increase in referrals, with excellent patient satisfaction and outcomes. Our goal is to establish a regional melanoma center, integrating clinical management, research and patient advocacy to further enhance patient care and outcomes.



Awards and achievements



Megan Hanson

Hanson began new genetics role

Megan Hanson, Genetic Counselor and Genetic Laboratory Lead, began a new role supporting cancer genetic counselors, oncologists and patients

across the system. She's a highly respected member of our genetic counseling team with a history of collaboration within and across teams.

Megan has been instrumental in the development of processes that have positively impacted the growth of genetic counseling services. This includes the adoption of an online family and health history questionnaire, the implementation of physician-ordered genetic testing for patients with prostate and pancreatic cancer, and numerous patient and clinician educational materials.



Alannah Henry,
ADN, RN

Nurse of Excellence Award

Each year, exceptional nursing practice is recognized at Methodist Hospital with the annual Nurse of Excellence Awards ceremony. One of this

year's recipients is **Alannah Henry, ADN, RN**, from HealthPartners Frauenshuh Cancer Center.



Balkrishna Jahagirdar,
MD

University of Minnesota awards

Balkrishna Jahagirdar, MD, received two prestigious awards from the University of Minnesota:

- Outstanding Clinical Mentor to fellows (five-time recipient)
- Clinical Excellence Award

A top-performing medical group in Minnesota

Our care group is one of the top-performing medical groups in the state, according to the latest Health Care Quality Report from Minnesota Community Measurement.

New clinicians

- Landon Bresina, PA-C
- Madeline Debol, PA-C
- Jessica Dusold, DNP-AGPC
- Cheryl Evans, DNP-F
- Miheer Pujara, MD
- Jane Tolkinen, DO

President's Award

The President's Award recognizes HealthPartners team members who provide outstanding service to our members, patients and colleagues. One of this year's recipients is **Abraham Westlund, Lab Assistant**, Methodist Hospital.

Abraham often plays piano and sings during his breaks. One of our patients heard him singing, and later she recognized him as her phlebotomist.

The patient's family asked Abraham to come sing to her. So, Abraham did, and the patient's day was made! Unfortunately, she passed away after being discharged. Abraham later sang at her funeral. He showed compassion by bringing joy to this patient during an extended and complicated hospital stay. Abraham has a great gift with his voice, and he brings peace and happiness to patients during their most difficult days.



Community awareness and support

We're actively involved in programs to increase cancer screenings, community awareness and support for patients with cancer.

New infusion center

A new, six-chair infusion center opened at Regions Hospital. It supports patients with outpatient service needs and ensures our cancer center has additional capacity to meet growing demand. Services include non-oncology infusions and injections (blood transfusions and IV antibiotics), and long-acting injectable medications for mental health and addiction medicine.



Radon educational event

Approximately 200 participants attended radon educational events at Frauentshuh Cancer Center and Regions Hospital. Each participant received a free radon kit and instructions on proper use. Minnesota homes are four times more likely than the national average to experience high radon levels.



Lung Cancer Biomarker Summit

Tim Larson, MD, was on panel at the Minnesota Lung Cancer Biomarker Summit, a collaborative group of Twin Cities health care systems. He discussed lung cancer biomarker best practices and maximizing treatment to benefit patients with lung cancer.



Screening and prevention

Minnesota State Fair

HealthPartners team members helped staff the lung cancer screening education booth at the Minnesota State Fair. Over the course of 12 days, more than 9,500 meaningful interactions about lung cancer awareness took place. Appointment and contact information was provided for those who met screening criteria.



Polyp removal

National standards for removing potentially cancerous polyps are 30% of all screening colonoscopies. Our rate is 49%, meaning we remove potentially cancerous lesions in almost half of our patients. We continue focused outreach with our Black patients and non-English-speaking patients before colonoscopies to ensure they know how to prepare for the procedure and encourage them to keep their appointments.

In-home colorectal cancer screenings

Colorectal cancer screenings save lives – but unfortunately, they often get missed or delayed. HealthPartners gives patients a choice of simple, affordable options to act on overdue colorectal cancer screenings. Since 2021, we've offered patients the opportunity to order an easy-to-use, at-home stool sample test through our online clinic, Virtuwell. The at-home tests, called a FIT kit, are less invasive than a colonoscopy and require no prep. Easy-to-use instructions and text message reminders helped increase the number of returned kits.

Community well-being initiatives

We work closely with our members, patients and colleagues to better serve our community.

Partnering with regional care systems

We're continuously building relationships with regional care systems to provide high-quality, integrated care and coverage to even more people across the upper Midwest, including expanding our health plan offerings in North Dakota, South Dakota, Wisconsin and Iowa.

Effecting change for the better

HealthPartners teams are creating programs to stop the stigma around mental illnesses, working to end the opioid epidemic, building affordable housing and addressing the health equity emergency. We're part of events and initiatives that effect change for the better, including Little Moments Count, Twin Cities Pride, Make It OK and more.

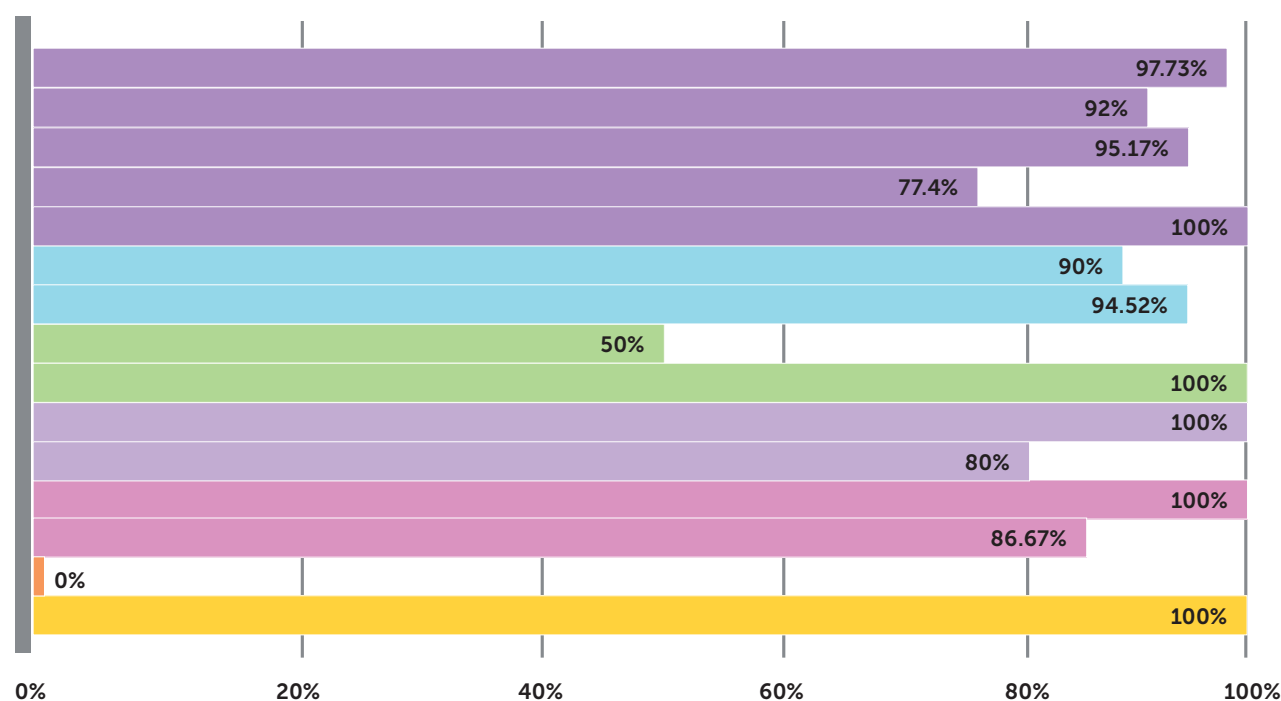
Walks and 5Ks

Our digestive health team participated in the Crohn's & Colitis Foundation's annual Take Steps Walk. We were awarded the Golden Toilet award for raising the most money by a team for the second year in a row. We also had colleagues represent HealthPartners at the annual Get Your Rear in Gear 5K, sponsored by the Colon Cancer Coalition.



Quality measures

These quality measures indicate the portion of patients with cancer treated according to recognized standards of care by diagnosis year. The quality measures are produced by the Rapid Cancer Reporting System (RCRS) of the National Cancer Database (NCDB), a joint program of American College of Surgeons (ACoS) and American Cancer Society. NCDB is a nationwide oncology outcomes database for more than 1,500 commission-accredited cancer programs.



Methodist Hospital

Diagnosis Date: 01/01/2023 – 12/31/2023

- Breast – Chemo 43/44
- Breast – Hormone 184/200
- Breast – Needle Bx 572/601
- Breast – Rad/Cons 161/208
- Breast – Rad/Mast 9/9
- Colon – Chemo 18/20
- Colon – Lymph Nodes 69/73
- Gastric – Chemo 3/6
- Gastric – Lymph Nodes 1/1
- Lung – No Surgery 5/5
- NSCLC – Chemo 4/5
- Rectal – Radiation 8/8
- Rectal – Resection 13/15
- Head and Neck – Radiation 0/0
- Melanoma – Adj. Therapy 3/3

Breast – Chemo

Combination chemotherapy or chemo-immunotherapy (if HER2 positive) is recommended or administered within 4 months (120 days) of diagnosis for women under 70 with AJCC T1cN0M0 or Stage IB-III hormone receptor negative breast cancer.

Breast – Hormone

Tamoxifen or third generation aromatase inhibitor is recommended or administered within 1 year (365 days) of diagnosis for women with AJCC T1cN0M0 or Stage IB-III hormone receptor-positive breast cancer.

Breast – Rad/Mast

Radiation therapy is recommended or administered following any mastectomy within 1 year (365 days) of diagnosis of breast cancer for women with > 4 positive regional lymph nodes.

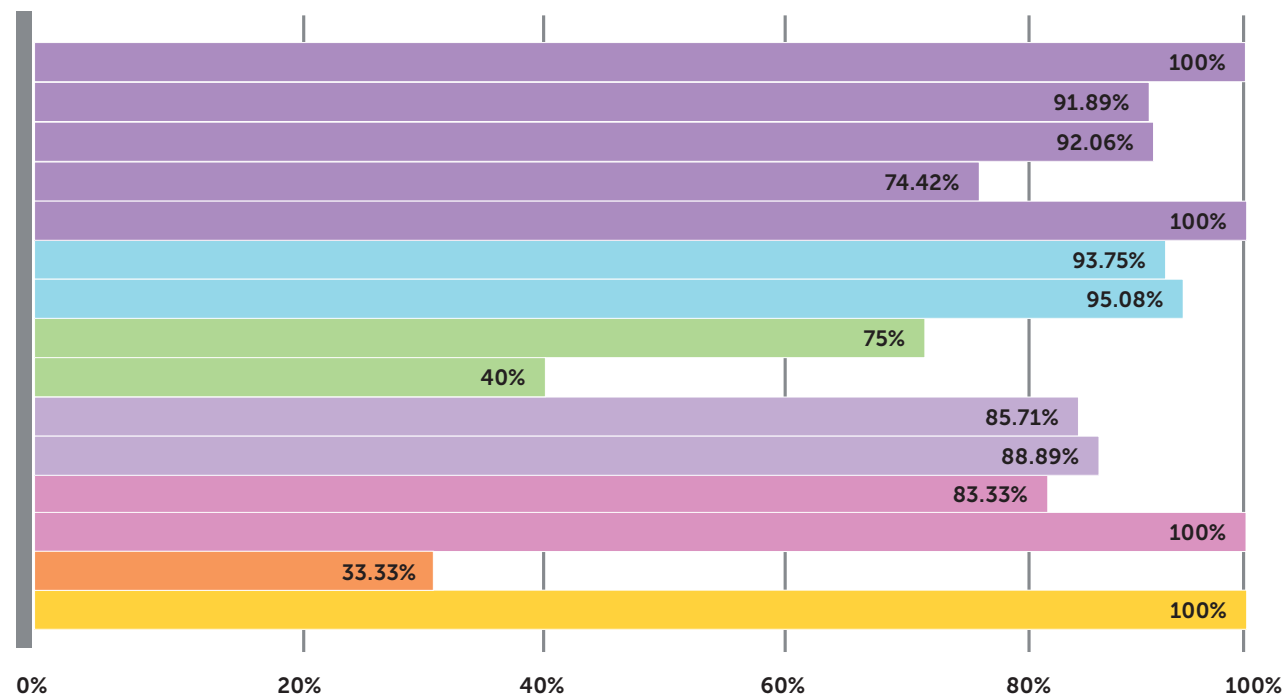
Colon – Chemo

For patients under the age of 80 with surgically-managed pathologic stage III colon cancer (N>0), adjuvant chemotherapy is initiated within 4 months (120 days) of diagnosis, or recommended.

Colon – Lymph Nodes

For patients undergoing a colon resection for colon cancer, at least 12 regional lymph nodes are removed and pathologically examined at time of resection.

These quality measures indicate the portion of patients with cancer treated according to recognized standards of care by diagnosis year. The quality measures are produced by the Rapid Cancer Reporting System (RCRS) of the National Cancer Database (NCDB), a joint program of American College of Surgeons (ACoS) and American Cancer Society. NCDB is a nationwide oncology outcomes database for more than 1,500 commission-accredited cancer programs.



Regions Hospital

Diagnosis Date: 01/01/2023 – 12/31/2023

- Breast – Chemo 30/30
- Breast – Hormone 102/111
- Breast – Needle Bx 255/277
- Breast – Rad/Cons 96/129
- Breast – Rad/Mast 2/2
- Colon – Chemo 15/16
- Colon – Lymph Nodes 58/61
- Gastric – Chemo 3/4
- Gastric – Lymph Nodes 2/5
- Lung – No Surgery 6/7
- NSCLC – Chemo 8/9
- Rectal – Radiation 10/12
- Rectal – Resection 19/19
- Head and Neck – Radiation 1/3
- Melanoma – Adj. Therapy 2/2

NSCLC – Chemo

For patients with surgically managed NSCLC, pathologically staged T2 and >4cm, or T>=3, or N>0, systemic therapy (chemotherapy, immunotherapy or targeted therapy) was initiated within the 3 months prior to surgery or after surgery, or was recommended.

Lung – No Surgery

Surgery is not the first course of treatment for cN2, M0 lung cases.

Rectal – Resection

For patients undergoing surgical resection for rectal cancer, the Circumferential Margin is greater than 1 mm from the tumor to the inked, non-serosalized resection margin.

Rectal – Radiation

For patients with surgically treated clinical T4NanyM0 or TanyN2M0 rectal cancer, neoadjuvant radiation therapy is initiated within 9 months prior to resection or recommended.

Melanoma – Adj Therapy

For surgically managed pathologic stage IIIB-D melanoma patients, adjuvant systemic therapy was initiated within 6 months of surgery or recommended.

Oncology registry

Most common cancer sites

The four most common cancers for HealthPartners and Park Nicollet patients in 2023 (excluding skin cancers) were breast, prostate, lung and colorectal. These four sites account for 59 percent of all cases.

TABLE 1:
2023 Four most common cancer sites

Table 1 compares, by site and percentage, HealthPartners and Park Nicollet case totals with estimated number of cancer cases in Minnesota and the U.S. according to Cancer Facts & Figures 2025.

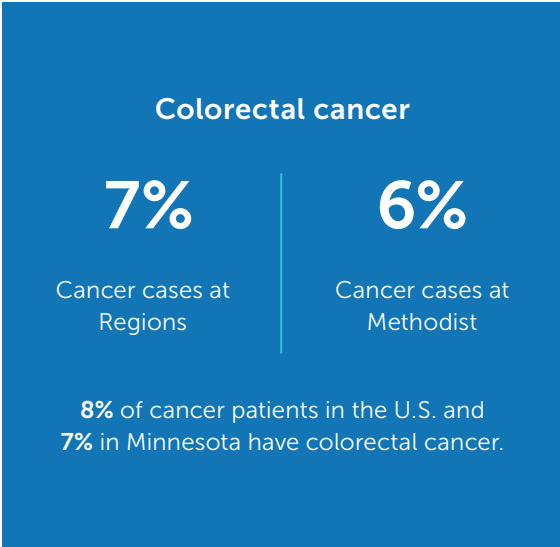
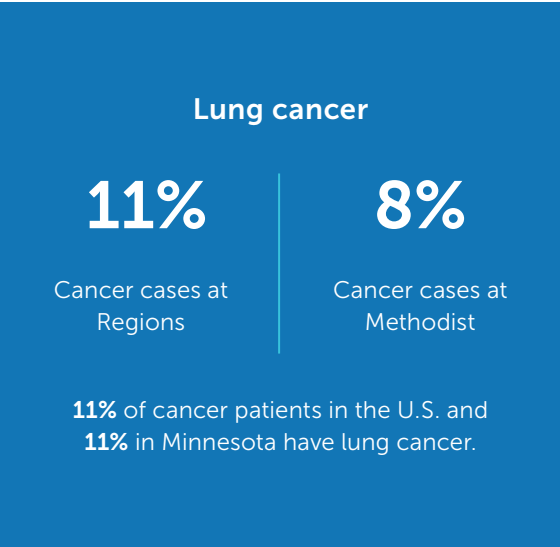
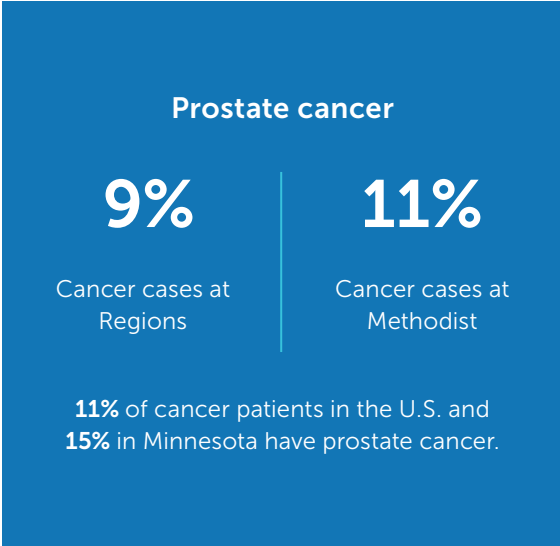
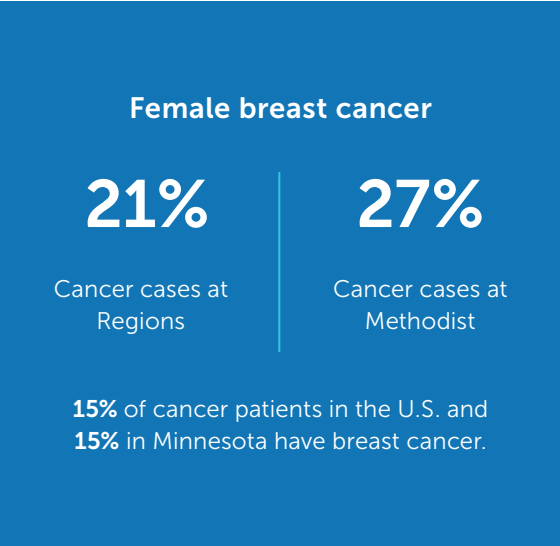


TABLE 2:
2023 Cancer Registry

HealthPartners Cancer Center at Regions Hospital and HealthPartners Frauentshuh Cancer Center registries contain a comprehensive profile of all newly diagnosed cancer using standards set by the American College of Surgeons.

	HealthPartners cancer care at Regions Hospital and Frauentshuh Cancer Center	
	2022	2023
Analytic cases (excludes physician office cases)*	4,373	4,601
Percentage of cases presented at tumor conferences	24% (1,046)	22% (995)

*Analytic: cases diagnosed and/or having initial therapy at HealthPartners Regions or Frauentshuh

TABLE 3:
2023 Leading Sites of Cancer Incidence

CANCER TYPE – MALES/DMAB	HealthPartners Regions		HealthPartners Frauentshuh	
	MALE (n=843)	%	MALE (n=1,224)	%
PROSTATE GLAND	160	19	382	31
SKIN	34	4	71	6
BRONCHUS & LUNG	96	11	108	9
BLOOD & BONE MARROW	72	9	101	8
URINARY BLADDER	50	6	78	6
COLON & RECTUM	76	9	97	8
KIDNEY	48	6	42	3
LYMPH NODES	52	6	70	6
PANCREAS	32	4	46	4
ESOPHAGUS	20	2	30	2

CANCER TYPE – FEMALES/DFAB	HealthPartners Regions		HealthPartners Frauentshuh	
	FEMALE (n=1,013)	%	FEMALE (n=1,605)	%
BREAST	385	38	754	47
SKIN	22	2	61	4
BRONCHUS & LUNG	117	12	119	7
CORPUS UTERI	59	6	92	6
COLON & RECTUM	60	6	80	5
BLOOD & BONE MARROW	65	6	85	5
LYMPH NODES	30	3	56	3
THYROID GLAND	29	3	42	3
PANCREAS	28	3	38	2
OVARY	8	1	15	1
KIDNEY	26	3	32	2
URINARY BLADDER	21	2	26	2

Education and research

Cancer Research Center (CRC) delivers the latest oncology care typically found only at leading academic health care institutions. With a strong focus on innovation, CRC maintains an active pipeline of medical cannabis research, phase I through phase III clinical trials, and investigator-initiated studies, consistently approving 3-4 new studies each month. Over the past year, CRC demonstrated exceptional efficiency, activating trials within an average of 56 days – well ahead of National Cancer Institute’s (NCI) recommended 90-day target. Additionally, CRC achieved an average time from site activation to first patient enrollment of just 1.5 months, significantly faster than the national average of 2-4 months. These achievements reflect CRC’s dedication to improving access and outcomes for the communities it serves. Our systemwide cancer centers also participate in Metro Minnesota Community Oncology Research Consortium (MMCORC), a nonprofit research program sponsored by NCI. MMCORC’s mission is to provide the opportunity for patients to enroll in a high-quality clinical trial for the treatment or prevention of cancer in their own community while being treated by a local physician. HealthPartners Cancer Center at Regions Hospital and HealthPartners Frauenthuh Cancer Center are the top accruing sites for the consortium, which recently received the platinum-level award from NCI for high enrollment.

Select publications

Jeanette Y. Ziegenfuss, Helen M. Parsons, Anne H. Blaes, Bruce Lindgren, Julia Andersen, Susan Park, Patricia I. Jewett, Arjun Gupta, **Dylan M. Zylla**. Data quality in a survey of registered medical cannabis users with cancer: nonresponse and measurement error. Publication 2024. JNCI Monographs. pubmed.ncbi.nlm.nih.gov/39108233

Scott R. Daigle; GiNell Elliott; Scott Boiko; David Sommerhalder; Marcus S. Noel; Sunil Sharma; Rama Balaraman; Martin Gutierrez; **Kurt Demel**; Ryan H. Moy; David Ciccone; Xinyang Zhang; Anita Scheuber; Pavan Kumar. Tumor immune microenvironment characterization from pre- and post-dose tumors collected from a phase I/II study of NDI-101150, a hematopoietic progenitor kinase 1 (HPK1) inhibitor. Poster. 2024. Society for Immunotherapy of Cancer (SITC) 2024. nimbustx.com/2024/11/07/nimbus-therapeutics-presents-positive-updated-data-from-phase-1-2-clinical-trial-of-hpk1-inhibitor-for-advanced-solid-tumors-at-sitc-39th-annual-meeting

Dylan Zylla, Helen Parsons, **Jeanette Ziegenfuss**, Bruce Lindgren, Susan Park, Patricia Jewett, Arjun Gupta, Anne Blaes. Association of Financial Wellness with Patterns of

Medical Cannabis Use and Patient-Reported Outcomes in Adults with Cancer. Publication 2024. Cannabis. publications.sciences.ucf.edu/cannabis/index.php/Cannabis/article/view/243

Maria Borrero, Patricia Jewett, **Dylan M. Zylla**, Helen M. Parsons, **Jeanette Y. Ziegenfuss**, Anne Hudson Blaes. Cannabis use for cancer-related symptoms in rural versus urban Minnesota. Abstract. 2024. American Society of Clinical Oncology (ASCO). meetings.asco.org/abstracts-presentations/231363

Dylan M. Zylla, Dame Idossa, Maria Borrero, Char Napurski, Stephen Dahmer, **Jordan Cowger**, **Grace Gilmore**, Xianghua Luo, Anne Hudson Blaes. A randomized trial of topical cannabis balms for the treatment of aromatase inhibitor-associated musculoskeletal syndrome (AIMSS). Abstract. 2024. American Society of Clinical Oncology (ASCO). meetings.asco.org/abstracts-presentations/231205

Marcus Smith Noel, **Kurt C. Demel**, Bhaskar Srivastava, Scott R. Daigle, Scott Boiko, Amanda Hoerres, Frank G. Basile, Xinyan Zhang, Patricia Fraser, Sue Dasen, Daria Chabas, Esha A. Gangolli, Rama Balaraman,

Sunil Sharma, Martin Gutierrez, David Sommerhalder Phase 1/2 trial of the HPK1 inhibitor NDI-101150 as monotherapy and in combination with pembrolizumab: Clinical update. Abstract. 2024. American Society of Clinical Oncology (ASCO). meetings.asco.org/abstracts-presentations/234139

E. E. Dumbrava, F. M. Iwamoto, M. Agulnik, M. Milhem, A. W. Tolcher, R. Chugh, M. J. Demeure, A. Mita, **K. Demel**, M. Diamond, B. Mirakhur, L. Wilson, A. Oganessian, D. Chan, H. N. Keer, J. Taylor, M. J. Sims, A. Biondo, S. Jueliger, A. Spira; Phase 1 study of MDM2 antagonist ASTX295 in patients with solid tumors with wild-type TP53. Poster. 2024. American Association for Cancer Research (AACR). aacrjournals.org/cancerres/article/84/7_Supplement/CT066/742337/Abstract-CT066-Phase-1-study-of-MDM2-antagonist?searchresult=1

Gary L. Ellison, PhD, MPH; Kathy J. Helzlsouer, MD, MHS; Sonia M. Rosenfield, PhD; Yun Kim, MPH; Rebecca L. Ashare, PhD; Anne H. Blaes, MD, MS; Jennifer Cullen, PhD; Neal Doran, PhD; Jon O. Ebbert, MD; Kathleen M. Egan, ScD; Jaimee L. Heffner, PhD; Richard T. Lee, MD; Erin A. McClure, PhD; Corinne McDaniels-Davidson, PhD, MPH; Salimah H. Meghani, PhD; Polly A. Newcomb, PhD; Shannon Nugent, PhD; Nicholas Hernandez-Ortega, MPH; Talya Salz, PhD; Denise C. Vidot, PhD; Brooke Worster, MD; **Dylan M Zylla, MD, MS**. Perceptions, prevalence, and patterns of cannabis use among cancer patients treated at 12 NCI-Designated Cancer Centers. Publication. 2024. JNCI Monographs. academic.oup.com/jncimono/article/2024/66/202/7728495

Dylan Zylla, MD, MS. Cannabis Use Registry to Improve Overall Understanding of Symptoms (CURIOUS) using the OnTracka platform in patients with cancer. Poster. 2024. Society of Cannabis Clinicians Medical Cannabis Conference. store.cannabisclinicians.org/scc-conference-2024/

Dylan Zylla, MD, MS. Impact of Cannabis on Immune Checkpoint Inhibition in Cancer - Time to Worry? Presentation. 2024 Roswell Park - Cannabinoids in Clinical Practice. 1st NYS Medical Cannabis Symposium. roswellpark.org/medcan2024

Heather N Moore, Marcus D. Goncalves, Abigail M. Johnston, Erica L. Mayer, Hope S. Rugo, William J. Gradishar, **Dylan M. Zylla**, Richard M. Bergenstal. Effective Strategies for the Prevention and Mitigation of Phosphatidylinositol-3-Kinase Inhibitor-Associated Hyperglycemia: Optimizing Patient Care. Publication. 2024. Clinical Breast Cancer. pubmed.ncbi.nlm.nih.gov/39462728

Dylan M. Zylla, MD, MS. HealthPartners Institute Cancer Research Center: Bringing Innovative Care Close to Home and Investigator-Initiated Studies Overview. Presentation. 2024. HealthPartners Clinical Research Investigaor Partnership (CRISP) Rounds. healthpartners.com/knowledgeexchange/display/document-int-rn539

Dylan M. Zylla, MD, MS. Holy Smokes! Cutting-Edge Cannabis Research in Cancer. Presentation. 2024. Methodist Hospital Grand Rounds. Given May 2024, right after trial one. healthpartners.com/knowledgeexchange/display/document-int-rn624

Rahul Aggarwal, MD; Glenn Heller, PhD; David W. Hillman, MS; Han Xiao, MD; Joel Picus, MD; Mary-Ellen Taplin, MD; Tanya Dorff, MD; Leonard Appleman, MD; Douglas Weckstein, MD; Akash Patnaik, MD; Alan Bryce, MD; Daniel Shevrin; James Mohler, MD; **Daniel Anderson, MD**; Arpit Rao, MD; Scott Tagawa, MD; Alan Tan, MD; Susan Halabi, PhD; Katharine Dooley, MPH; Patrick O'Brien, BS; Ronald Chen, MD, MPH; Charles J. Ryan, MD; Scott E. Eggener, MD; and Michael J. Morris, MD. PRESTO: A Phase III, Open-Label Study of Intensification of Androgen Blockade in Patients With High-Risk Biochemically Relapsed Castration-Sensitive Prostate Cancer (AFT-19). Abstract. 2024. American Society of Clinical Oncology (ASCO). ascopubs.org/doi/10.1200/JCO.23.01157

Mitchell R. Smith; Opeyemi A. Jegede; Peter Martin; Brian G. Till; Samir S. Parekh; David T. Yang; Eric D. Hsi; Thomas Witzig; Sandeep Dave; David Scott; Curtis Hanson; Lale Kostakoglu Shields; Nizar Abdel-Samad, Carla Casulo; Nancy L. Bartlett; Paolo F. Caimi; Tareq Al Baghdadi; Kristie A. Blum; Mark D. Romer; David J. Inwards; **Rachel E. Lerner**; Lynne I. Wagner; Richard F. Little; Jonathan W. Friedberg; John P. Leonard; Brad S. Kahl; Randomized study of induction with bendamustine-rituximab ± bortezomib and maintenance with rituximab ± lenalidomide for MCL. Abstract. 2024. American Society of Hematology (ASH). ashpublications.org/blood/article-abstract/144/10/1083/516345/Randomized-study-of-induction-with-bendamustine?re-directedFrom=fulltext

Daniel Anderson, MD. Antibody drug conjugates in Oncology - Exciting new developments in precision medicine. Presentation. 2024. HealthPartners Regions Hospital Internal Medicine Grand Rounds. healthpartners.com/knowledgeexchange/display/document-int-rn649

Select trials

DB-1311-O-1001: A phase I/II-a, multicenter, open-label, first-in-human study to assess the safety, tolerability, pharmacokinetics and preliminary antitumor activity of DB-1311 in subjects with **advanced/metastatic solid tumors**

XTX301-01/02-001: A first-in-human, multicenter, phase I/II, open-label study of XTX301 in patients with **advanced solid tumors**

INBRX-106: An open-label, multicenter, first-in-human, dose-escalation, multicohort, phase I/II study of INBRX-106 and INBRX-106 in combination with pembrolizumab in subjects with **locally advanced or metastatic solid tumors** (KEYNOTE-A99)

BNT327-02: A phase II, multisite, randomized, open-label clinical trial to evaluate the safety, efficacy and pharmacokinetics of BNT327 at two dose levels in combination with chemotherapeutic agents as first- and second-line treatment in **triple-negative breast cancer**

TTX-080-001: Phase I-b randomized arms, multicenter, open-label part of the study is designed to evaluate FOLFIRI plus cetuximab with or without TTX-080 in patients with **WT RAS/ WT BRAF/HER2-Negative MSS mCRC**

CanPan IIT: A randomized phase II trial of medical cannabis to Reduce symptom burden in patients with **advanced pancreatic cancer** (CanPan)

MK-5684-004: A phase III, randomized, open-label study of MK-5684 versus alternative abiraterone acetate or enzalutamide in participants with **metastatic castration-resistant prostate cancer (mCRPC)** and have progressed on or after prior treatment with one next-generation hormonal agent (NHA) for metastatic hormone-sensitive prostate cancer (mHSPC)

HC366-RCC2311 MK-6482: A phase I-b, open-label, safety, tolerability and efficacy study of HC-7366 in combination with belzutifan (Welireg) in subjects with locally **advanced (inoperable) or metastatic renal cell carcinoma**

HLX10-005-SCLC301-E: A randomized, open-label study of HLX10 plus chemotherapy (carboplatin-etoposide) in comparison with atezolizumab plus chemotherapy in previously untreated U.S. patients with **extensive stage small cell lung cancer (ES-SCLC)**

J3M-MC-JZQB: A global pivotal study in patients with **KRAS G12C-mutant, locally advanced or metastatic non-small cell lung cancer** comparing first-line treatment of pembrolizumab and LY3537982 vs. pembrolizumab and placebo in those with PD-L1 ≥ 50% or pembrolizumab, pemetrexed, platinum chemotherapy and LY3537982 vs pembrolizumab, pemetrexed, platinum chemotherapy and placebo regardless of PD-L1 expression

SMT112-3003: A randomized, controlled, multiregional phase III study of ivonescimab combined with chemotherapy versus pembrolizumab combined with chemotherapy for the **first-line treatment of metastatic squamous non-small cell lung cancer** (HARMONI-3)

PRESERVE-003: A phase III, two-stage, randomized study of ONC-392 versus docetaxel in metastatic **non-small cell lung cancers** that progressed on PD-1/PD-L1 inhibitors

NT019-101: A first-in-human, open-label dose escalation and expansion study of orally administered NX-019 in patients with **advanced EGFR mutant cancer**

AMG 193: 20230167: A phase I-b study evaluating the safety, tolerability, pharmacokinetics and efficacy of AMG 193 alone or in combination with other therapies in subjects with **advanced thoracic tumors with homozygous MTAP deletion**

AMG 193: 20220127: A phase I/II study evaluating the safety, tolerability, pharmacokinetics, pharmacodynamics and efficacy of AMG 193 in combination with IDE397 in subjects with **advanced MTAP-null solid tumors**

REFRaME-L1: A phase II, open-label study evaluating STRO-002, an anti-folate receptor alpha (FOLR1) antibody drug conjugate, in subjects with previously treated **advanced or metastatic non-small cell lung cancer expressing FOLR1**

CanLab: Correlation of cannabinoid concentrations to effective dose from patients initiating cannabis consumption **for cancer-related symptoms**

Network cancer committee members 2024

The HealthPartners and Park Nicollet cancer committee is a unified group that oversees standards, activities and services across the organization. As one group, we're able to provide a consistent, high level of care for all patients. HealthPartners Cancer Care is pursuing accreditation as an Integrated Network Cancer Program through the American College of Surgeons.

Daniel Anderson, MD, MPH
Medical Oncology

Kathryn Baxstrom, MD
Medical Oncology

E. Belzer, MD
Colon and Rectal Surgery,
Medical Director, NAPRC

Rachel Bennett, MSW, LICSW
Social Worker

Sue Braaten, CTR
Cancer Registry Supervisor

Benjamin Brasseur, MD
Colorectal Surgeon

E. J. Buckley, MB BCH
Breast Surgeon
(Cancer Liaison Physician,
American College of Surgeons)

Christopher Chow, MD
Colon and Rectal Surgery

Michael Clark, MD
Diagnostic Radiology

Christine Colbach, MD
Pathology

Kevin Collis, RN, OCN
Nurse Navigator

Amy Feist, RN, OCN
Nurse Navigator

Grace Gilmore
Research

Holly Guida, RN-BSN, MBA
Oncology Program Manager

Lauren Gunderson, MS, CGC
Genetic Counselor

Kristin Hanrahan
Quality Improvement

Megan Hanson, MS, CGC
Genetics

Keith Heaton, MD
General Surgery, Surgical Oncology
(Cancer Liaison Physician,
American College of Surgeons)

Joanna Hill, MBA, CCRP
Research Manager

Laura Holasek
Director, Oncology

Anne Hopkins, RN, OCN
Oncology Program Manager

Peter Hurley, MD
Medical Oncology,
Hospital Service Liaison Physician

Maggie Jaehne, MSW, LGSW
Social Worker

Balkrishna Jahagirdar, MBBS
Medical Oncology

Sarah Jax, NP-A, NP-G
Survivorship Program

Michele Lacy, RN, BSN, OCN
Director, Research

Jessica Lane
Mammo A Go-Go Coordinator,
Jane Brattain Breast Center

Brenda Larson, MD
Medical Oncology

Pam Mason, MS
American Cancer Society

Sheila Mayo, RTR(M)
Breast Health Center

Matt McCoy, MD
Pathology

Theresa Menke, MS, RDN, LD
Food and Nutrition Services

Angela Nelson
Radiology

Michelle Nettesheim
Manager, Hospice and Palliative Care

Sandra Nevinski, BSN, RN
Home Care, Hospice
and Palliative Medicine

Gretchen Niemioja, MD
Rehabilitation Services

Evan Page, MA/CCC-SLP
Rehabilitation Services

Kristin Ritter, MD
Breast Surgeon

Rob Ruff, M-Div, BCC
Pastoral Care

Emily Schoh, RN, MSN, OCN
Nursing

Bryan Schuler, PharmD, BCOP
Pharmacy

Denise Shannon, MSW, LICSW
Lead Oncology Social Worker

Charles Shideman, MD
Radiation, Oncology

Jane Siekkinen, BS, CTR
Oncology Registry Manager

Lashonda Soma, MD
Radiology

Paul Spilde, PT
Rehabilitation Services

Caitlyn Squire, MSW, LICSW
Patient Support and Education

Caroline Sullivan
Manager, Palliative Care

Somu Suppiah, MD
Radiation Oncology

Bonnie Sweeney, RN, BSN, MBA
Nursing

Daniel Townsend, DO
Medical Director, Palliative Care

Mark Wilkowske, MD
Medical Oncology

Emily Wright, M-Div
Chaplain

Alexandra Zimmerman, RDN, LD
Food and Nutrition Services

Oncology clinician team

Gilberto Almanza, NP-A	Cassandra Green, MSN, RN, FNP-C	Mark Menge, MD
Daniel Anderson, MD, MPH	Tulasi Gummadi, MBBS	Craig Mescher, MD
Sarah Atkins, MD	Michael Haley, DO	Kathryn Moore, MD
Claudia Bauman, MD	Keith Heaton, MD	Gretchen Niemioja, MD
Kathryn Baxstrom, MD	Jason Hoiness, PharmD	Kester Philips, MD
Turang Behbahani, MD	Kathryn Houselog, NP-A	Becky Philipsek, PA-C
Kacy Berquist, MSN, APRN, NP-AGPC	Anna Hughes, PA-C	Laura Pillsbury, PA-C
Michael Blazer, MD	Peter Hurley, MD	Miheer Pujara, MD
Landon Bresina, PA-C	Randy Hurley, MD	Karen Rabenau, MD
Abigail Brubaker, PA-C	Annie Jacobsen, MD	Brian Rank, MD
Nicole Buuck, PharmD, BCPS	Jeffrey Jaffe, MD	Anne Reiber, ANP, GNP
Cathleen Chen, MD	Balkrishna Jahagirdar, MBBS	Robert Schneidewend, DO
Madeline Debol, PA-C	Aditya Jain, MD	Rena Shah, MD
Kurt Demel, MD	Sarah Jax, NP-AGPC	Melissa Sherman, MD
Christine Ding, MD	Kathryn Jelle, PA-C	Charles Shideman, MD
Levi Downs, MD	Yan Ji, MD	Amy Spomer, MD
Arkadiusz Dudek, MD, PhD	Brittney Marie Joachim, NP-F	Somu Suppiah, MD
Kaitlin Durkin, DNP-AGAC	Elana Knack, MD	Wael Toama, MD
Jessica Dusold, DNP-AGPC	Bhaskar Kolla, MD	Kandice Tolic, NP-WH
Mary Ehresman, FNP, ADCN	Stephanie Kroon, PA-C	Jane Tolkinen, DO
Ben Eidenschink, MD	Kendra Kubiak, MD	Jayanthi Vijayakumar, MBBS, MS
Cheryl Evans, DNP-F	Priya Kumar, MBBS	Punit Wadhwa, MD
Kelsa Evans, PA-C	Lisa Lafranchi, PA-C	Kimberly Walsh, NP-A
Brad Farrell, PharmD	Brenda Larson, MD	Mark Wilkowske, MD
Lori Fewer, CFNP	Timothy Larson, MD	Kelly Young, DNP-F
Chitra Ganesan, MBBS	Rachel Lerner, MD	Dylan Zylla, MD, MS
Colton Gits, MD	Steven McCormack, MD	
Warren Goodman, MD	Cierra McDougall, PA-C	



Training the next generation of oncologists

One of the core missions of our organization is to train the next generation of physicians and scientists to be leaders in the field of oncology. Regions Hospital is proud to host a clinical training site for the University of Minnesota Hematology and Oncology Fellowship Program. For more than 25 years, this training has included direct supervision of patient care, didactic lectures and informational teaching sessions. Each year, more than 50 hours of didactic lectures are provided to University of Minnesota medical students, internal medicine residents, hematology-oncology fellows, primary care and emergency room physicians, oncology nurses, and pharmacists.

Leadership in professional organizations

Daniel Anderson, MD

- MSCO Investigator
- Metro Minnesota Community Oncology Research Consortium, Principal Investigator

Kurt Demel

- ASCO/ABIM taskforce for board exam development

Annie Jacobsen, MD Hematology and Oncology

- Lakeview Hospital Board of Directors
- Chair, Antithrombotic Therapy Guidance Council (ATTG) Committee
- Faculty Coach for the UMN Internal Medicine Residency Program
- HealthPartners and Valley Ethics Committee

Balkrishna Jahagirdar, MD

- MSCO Educational Program Chair

Sarah Jax, APRN, CNP

- MSCO Membership Liaison

Yan Ji, MD

- MSCO Secretary
- Metro Minnesota Community Oncology Research Consortium, Co-Principal Investigator

Lisa Lafranchi, MPAS, PA-C

- MSCO board member at large

Dylan Zylla, MD

- Methodist Hospital Medical Executive Committee, elected member
- Minnesota Office of Cannabis Management – appointed member to the Cannabis Advisory Council by Governor Tim Walz
- Alliance for Clinical Trials in Oncology, member of Symptom Intervention and Community Oncology committees
- American Society of Clinical Oncology – co-chair for Patient Reported Outcome Guideline Committee

Give hope. Give possibility.

Park Nicollet Foundation 2024 cancer care support:

- 602 donors
- \$906,893 raised

Regions Hospital Foundation 2024 cancer care support:

- 198 donors
- \$3,902,153 raised

Your generous gifts support:

- Basic needs assistance
- Care navigation assistance
- Classes and support groups
- Clinical cancer research
- Integrative therapies including music and massage therapy
- Non-moving patient care model
- Survivorship programming

Be a part of our mission in action



Donate at parknicollet.com/donate
Contact us at foundation@parknicollet.com



Donate at regionshospital.com/donate
Contact us at rhf@healthpartners.com



Before I was diagnosed with cancer, I didn't really know a lot about integrative therapy or how it could help. My medical team at Frauenthuh was fantastic, and the added massage and music therapy made my experience even better ... I'm so grateful those services were available.

— Steve

HealthPartners Institute

Advancing health and well-being through research and education

We conduct hundreds of research studies each year to improve lives. We also support clinical learning at HealthPartners through the training of many health professionals. We're a member of the national Cancer Research Network and offer unique and novel therapies through an early phase therapeutics program using the newest investigational drugs available for research. Through clinical trials, we support patients with cancer in our community and contribute to life changing science around the globe.

Visit healthpartners.com/institute for more information.



To make an appointment in the metro area, call **612-341-4800**.

To make an appointment in greater Minnesota, call **800 359 8052**.

healthpartners.com/cancer