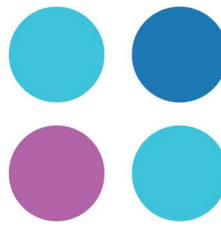


# OHPE Update:

A Newsletter for Residents, Students,  
& Clinician Educators



May 2021

## From the Office of Health Professional Education

Last month, the *Our Voices, Our Stories* forum provided an opportunity for colleagues to share personal stories and perspectives about each of our experiences around diversity, equity and inclusion.

All four sessions are now available on [myPartner](#).



### Upcoming events and reminders

**2021 MMCGME Virtual Quality Forum** – May 26, 2021

Visit the event website for more details: [www.mmcmgeservices.org/QF](http://www.mmcmgeservices.org/QF)

**ACGME Resident Milestones Due Date** – June 25, 2021

### OHPE New Resident/Fellow Orientation dates

- **6/15/2021, 8:30 am-11:30 am -Affiliate New Resident/Fellow Orientation**  
Obstetrics/Gynecology; Medicine-Pediatrics; Neurology
- **6/21/2021, 7:30 am-11:30 am - HealthPartners Sponsored New Resident/Fellow Orientation**  
Emergency Medicine; Emergency Medicine PA; Family Medicine; Foot & Ankle; Occupational Medicine
- **6/22/2021, 9 am-12 pm - Affiliate New Resident/Fellow Orientation**  
Cardiology; ENT; Internal Medicine; Medicine-Dermatology; Orthopedic Surgery; Psychiatry
- **7/2/2021, 7:30 am-10:30 am - Affiliate New Resident/Fellow Orientation**  
Gastroenterology; Hematology/Oncology; Gynecologic Oncology; Palliative Care; Physical Medicine & Rehabilitation; Pulmonary/Critical Care; Rheumatology; Surgery (General, Critical Care, Vascular); Plastic Surgery; Urology 8/2/2021
- **7/2/2021, 7:30 am-11:30 am - Affiliate New Resident/Fellow Orientation**  
Dermatology; Pediatric Emergency Medicine-EM; EMS; Hand Surgery; Medical Toxicology

**Join the Methodist Hospital/Creekside Family Medicine Residency program for a dual celebration on August 6, 2021.**

The program will honor Jeremy Springer, MD on his retirement and mark 50th anniversary of the program. The event will be held at the St Louis Park Recreation Outdoor Center.

Jeremy Springer, MD, is retiring from Park Nicollet at the end of this month. Earlier this year, Dr. Springer was a guest and shared his experience in medical education during our monthly [OHPE Unplugged series](#).

## OHPE Announcements

### Join our Clinician Affinity Groups

Clinician affinity groups are an opportunity for clinicians with common backgrounds, interests or orientations to come together and create new connections and support. Clinicians have the opportunity to join or form affinity groups. You can start an Affinity group or join an existing affinity group. Learn more about affinity groups here: <https://intranet.healthpartners.com/Clinician-Affinity-Groups/Pages/default.aspx>

**Black Clinicians Affinity Group:** Designed to provide a space for clinicians who identify as Black to interact with each other, to share lived experiences, and to find community and connection. Please email [Tseganesh.X.Selameab@HealthPartners.Com](mailto:Tseganesh.X.Selameab@HealthPartners.Com) for more information or if you are interested in joining.

**Clinician Well-being Affinity Group:** A place for clinicians to connect and create a community to support each other in our individual and collective wellbeing. Please email [Anand.K.Shah@HealthPartners.Com](mailto:Anand.K.Shah@HealthPartners.Com) for more information or if you are interested in joining.

### OHPE Unplugged videos available on myPartner

OHPE Unplugged is a monthly faculty development series for clinician educators to connect, build community and share best practices in the areas of teaching and learning, scholarship, professionalism, leadership, well-being and diversity & inclusion.

Each month, colleagues share experiences in medical education from across our organization. Last month, [Jonathan Shelver, MD](#) [shared his journey](#) from learning to teaching. Visit [OHPE Unplugged](#) to view archived videos and show notes.

## People Updates

### Meet OHPE Team - Kat Hennan

Kat Hennan supports the Internal Medicine Residency program and medical student rotations. To learn more about Kat, watch [video here](#).



## Connect with us

Visit the Institute website, to learn more about Health Professional Education at HealthPartners: <https://www.healthpartners.com/institute/education/ohpe/>

If you have a story you would like to contribute the monthly OHPE Update, email submissions to: [Pratakshya.x.Bhandari@healthpartners.com](mailto:Pratakshya.x.Bhandari@healthpartners.com)