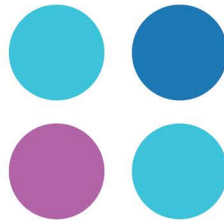


OHPE Update:

A Newsletter for Residents, Students,
& Clinician Educators



August 2021

From the Office of Health Professional Education

This month, we celebrated the first ever GME/OHPE Administrative Professionals Day, a new annual day dedicated to recognizing the hard work of GME professionals.

This year and every year going forward, the third Friday in August is GME Administrative Professionals Day, organized by the Association for Hospital Medical Education and celebrated on social media using the #GMEProfessionalsDay. Here at HealthPartners, we support a broader scope of trainees so we're going to call it OHPE Administrative Professionals Day!

Along with a lunch that provided an opportunity for our colleagues to come together and celebrate, we received [messages of appreciation and gratitude](#) from all across Health Professional Education, thanking coordinators and administrative professionals for the incredible work they do to support the training of health professionals.



I would like to give my appreciation to Abby Ward and the team at the OHPE Office for your exemplary work in helping us learn and grow with the SS4L application. The whole year of 2020 was a tough year & Abby and her team were bright lights as they helped us learn, re-learn and use the SS4L application to streamline and standardize our laboratory student clinical rotations across all HP labs. - Patricia Croal



Amy does a phenomenal job with our programs recruitment efforts and weekly conference production and coordination! In addition she brings a positive energy to our program and serves as a great resource for the residents! - Cullen Hegarty



Kat Hennan is unflappable. She has the ability to anticipate tasks and work prior to it arriving and is always on top of her game. She is kind and supportive of the residents both online and when they come to her with problems. We are so lucky to have her in our office. - Paula Skarda



Kristin does an exceptional job of leading our admin team, keeping us all organized and focused, and helping to bring new ideas and energy to our program! She has been a truly great addition to our team and has really worked well with our faculty and residents! - Cullen Hegarty

Upcoming events and reminders

Join us for the next OHPE unplugged session on September 16

Our guest next month will be Dr. Nathan Chomilo. Join us on September 16 at 12 pm via WebEx.

Link to join: <https://healthpartners.webex.com/healthpartners/j.php?MTID=m998645940dc8fa0d5058f06ef95fcf75>

September 2021 All-Colleague Connect Series: Dates, times and co-hosts

Tuesday, Sept. 7, at noon with DeLinda Washington, Chief People Officer

Wednesday, Sept. 8, at 7 a.m. with Mark Sannes, MD, Senior Medical Director, Medical Specialties

Friday, Sept. 10, at noon with Nico Pronk, President, HealthPartners Institute and Chief Science Officer

Tuesday, Sept. 14, at noon with Jim Eppel, Executive Vice President and Chief Administrative Officer

To attend a session, follow the instructions available on [myPartner](#).

Register [here](#) for the 2021 American Brain Tumor Association's 2021 virtual National Conference.

Courtney Burnett, MD, 30-year-old internal medicine physician, author, speaker and brain tumor survivor, shares her unexpected brain tumor diagnosis of a malignant grade 3 anaplastic astrocytoma.

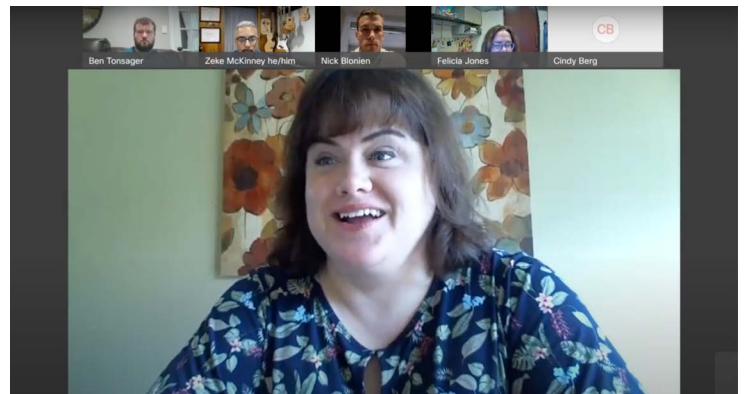
Hear how her experience reshaped her thinking and approach to life, including how she found and spread joy with a "difficult gift," a gift that teaches us, motivates us, changes us and inspires us.

www.abta.org/2021-national-conference

OHPE Announcements

Welcoming new colleagues during 2021 new resident orientation

Our New Resident Orientation was virtual for the second year in a row. This year, we welcomed 166 new residents and fellows (136 affiliates and 30 HPI-Sponsored), from 32 programs, across 5 orientation dates. 135 of the residents/fellows attended the live WebEx and 31, who were unable to attend, were sent the link to the recorded session.



Updated GME policies

Our GME policies have been updated recently. Click here to view updated policies: <https://intranet.healthpartners.com/Clinical-Educator-Trainee-Resources/Pages/GME-Policies.aspx>

Program Updates

Multi-disciplinary partnership provides active security threat response training

The commotion at the Westfields Hospital Emergency Room on June 28th was, for once, a welcome experience designed to be a learning opportunity. A multi-disciplinary team including HealthPartners Clinical Simulation, Westfields Hospital Safety and Security, New Richmond Police Department and Lakeview EMS were conducting a simulation training in the Westfields Emergency Room to address a critical issue in healthcare: how to manage and safely navigate an active security threat situation.

Don Brock, RN, BSN, a clinical educator at Westfields, has responded to many challenging scenarios during his military career and while working in the Emergency Department at both Westfields and Regions Hospital. He led the Westfields Safety and Security team to partner with HealthPartners Clinical Simulation after noticing an increase in safety related incidents. The team developed simulation scenarios to provide training and education for staff to be able to respond to active security situations.

The training included an overview of security policy and procedures and helped identify vulnerabilities and strengths in the emergency department. The staff was able to uncover gaps, understand workflows and processes, resulting in action items that will be sent to leaders, evaluated, and implemented.

The New Richmond Police Department and Lakeview EMS actively participated and provided a team building opportunity with the local community, helping each team understand each other's strengths and weaknesses. Leaders across the multi-disciplinary team identified value in providing simulation training across teams. Pete Bennet, BA, RN, CEN, CPEN, Clinical Simulation Educator, was actively involved in designing the training and helped develop scenarios in consultation with community partners and the teams involved. After reviewing concerns and examining the physical space, opportunities for training were identified, and the simulation scenarios were designed to safely challenge participants.

The successful training and after-action report identify opportunities for improvement in how the Westfields Emergency Department staff manages and safely navigates active security threat situations. The partnership also highlights an opportunity for simulation to be embedded across interdisciplinary teams to identify gaps and strengths of team approaches.



Rural Training track residents begin the rural side of their program

The next doctors in the HealthPartners Western Wisconsin Rural Family Medicine Residency have begun experiencing the rural side of their program. Doctors Adam Strohschein and Dwijesh Sheth are now splitting their time between Amery Hospital & Clinic and Westfields Hospital & Clinic. They spent the past year at Methodist Hospital – where they were exposed to high volumes of patients, many of whom required complex care. Read the full story on [myPartner](#).

Colleague's experience inspires first Diversity, Equity and Inclusion Simulation

As an emergency room technician at Regions Hospital, Sumaya Noor enjoys caring for patients and spending time with her colleagues.

But in her role, Sumaya experiences racism – both explicitly and implicitly. One moment in particular stands out in Sumaya's memory, and it has sparked a program to help other colleagues learn how to respond to racism in the workplace. Read the full story on [myPartner](#).

Family Medicine Residency Program celebrates 50 years with community gathering

The U of M/Methodist Hospital Family Medicine Residency Program celebrated its 50th anniversary at the St Louis Park Recreation Outdoor Center earlier this month. Two hundred people, including 70 current and former residents, came from all over the country to both reminisce and celebrate the retirement of Dr. Jeremy Springer, the program's director since 2000. The event featured food, entertainment and presentation of Park Nicollet Foundation awards to Dr. Mary Wagner (Community Service Award) and Dr. Springer (Earl G. Young Physician of Excellence Award). (Mary and Jeremy are pictured on the right.)

"It was fantastic," said Dr. Shannon Neale, one of the organizers, "All the graduates who attended were really appreciative of the effort and loved interacting with their colleagues."



Connect with us

Visit the Institute website, to learn more about Health Professional Education at HealthPartners:
<https://www.healthpartners.com/institute/education/ohpe/>

If you have a story you would like to contribute the monthly OHPE Update, email submissions to:
Pratakshya.x.Bhandari@healthpartners.com

