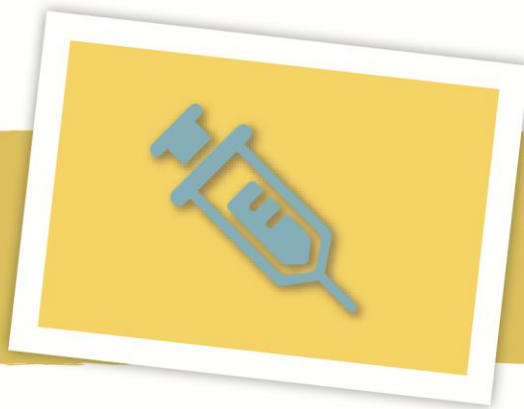


We've brought the clinic to you – at work.



What can I be seen for at my Well@Work clinic?

Well@Work can diagnose and treat most routine needs, including:

- Cold & flu
- Strep throat
- Sprains
- Seasonal allergies
- Ear infections
- Women's Health
- Sinus infections
- Back pain
- Lab tests and more

Who can be seen at Well@Work

Anoka County employees and dependents ages 18 months and older on the Anoka County sponsored medical plan.

Appointments

There are two convenient ways for you to make an appointment at your Well@Work clinic. If this is your first time making an appointment, call the appointment center at **952-967-7478** to get registered.

After scheduling your first appointment you can schedule online at **healthpartners.com**.

Most appointments take about 20 minutes. Because there's only one provider available, you may sometimes have a longer wait time.

When should I be seen in an emergency room or by my primary doctor?

Although Well@Work can help you with many needs, the clinic isn't set up to handle complex health conditions. For that reason, more complex conditions should be managed by your primary doctor or specialist. Examples of what should be seen by a primary doctor, emergency room or specialist include:

- History of stroke, heart attacks or heart disease
- Head injuries/concussions/dizziness
- Allergy shots
- Chest pain
- Abdominal pain
- Shortness of breath



Location:

Anoka County Government Center
325 East Main Street
Suite W120
Anoka, MN 55303

Hours:

Monday, Wednesday, Friday 8:30 a.m. - 5 p.m.
Tuesday, Thursday 7:30 a.m. - 4 p.m.